

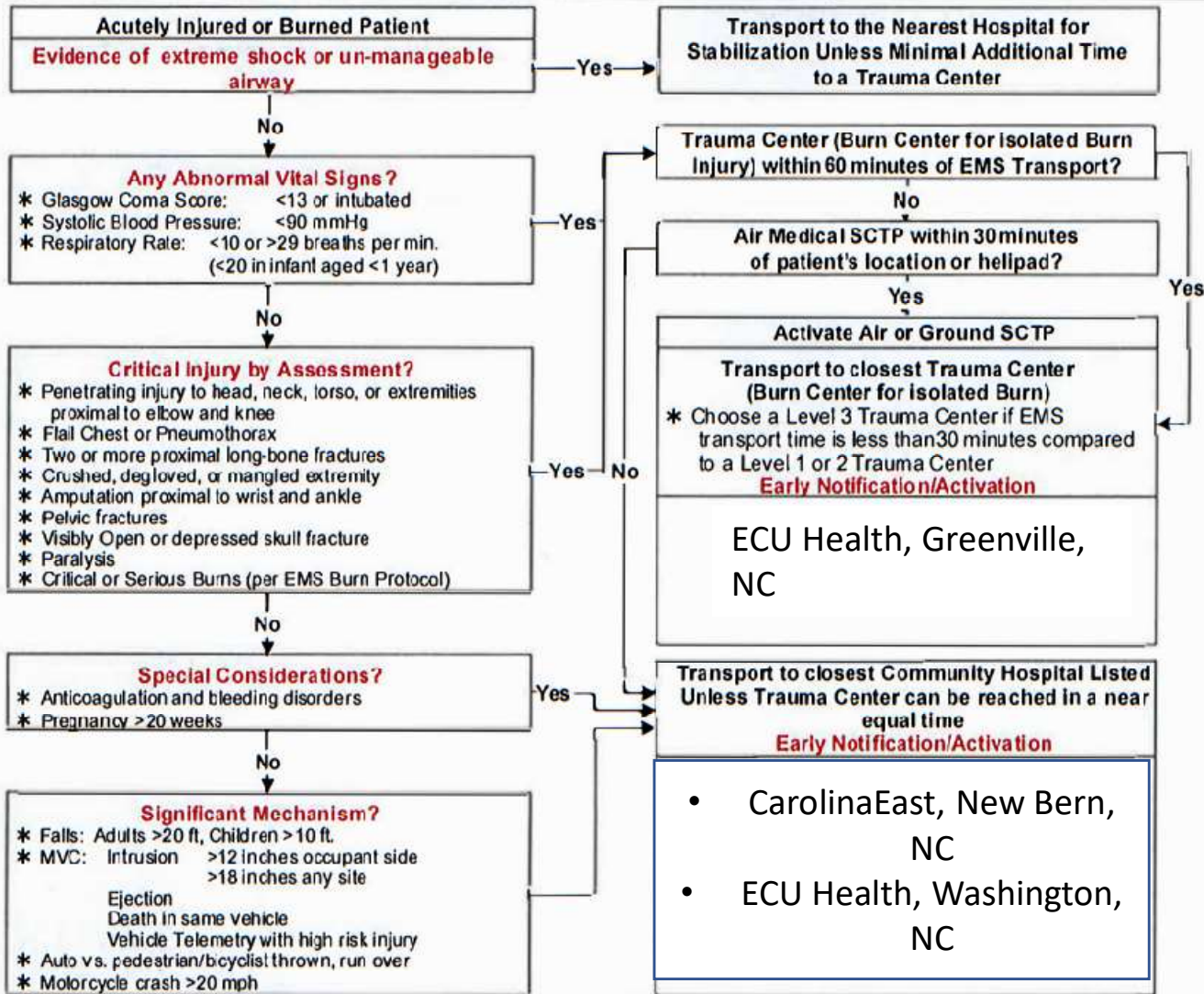
Trauma and Burn EMS Triage and Destination Plan



Trauma or Burn Patient = Any patient less (regardless of age) with a significant injury or burn

The Purpose of this plan is to:

- * Rapidly identify injured or burned patients who call 911 or present to EMS
- * Minimize the time from injury to definitive care for critical injuries or burns
- * Quickly identify life or limb threatening injuries for EMS treatment and stabilization
- * Rapidly identify the best hospital destination based on time of injury, severity of injury, and predicted transport time
- * Early activation/notification to the hospital of a critically injured or burned patient prior to patient arrival
- * Minimize scene time to 10 minutes or less from patient extrication with a "load and go" approach
- * Provide quality EMS service and patient care to the EMS Systems citizens
- * Continuously evaluate the EMS System based on North Carolina's EMS performance measures



Trauma and Burn EMS Triage and Destination Plan

Pearls and Definitions

- * **All Injury and Burn Patients must be triaged and transported using this plan. This plan is in effect 24/7/365**
- * **All Patient Care is based on the EMS Trauma Protocols**
- * **Designated Trauma Center** = a hospital that is currently designated as a Trauma Center by the North Carolina Office of Emergency Medical Services. Trauma Centers are designated as Level 1, 2, or 3 with Level 1 being the highest possible designation. Free standing emergency departments and satellite facilities are not considered part of the Trauma Center.
- * **Burn Center** = a ABA verified Burn Center co-located with a designated Trauma Center
- * **Community Hospital** = a local hospital within the EMS System's service area which provides emergency care but has not been designated as a Trauma Center
- * **Specialty Care Transport Program** = an air or ground based specialty care transport program which can assume care of an acutely injured patient from EMS or a Community Hospital and transport the patient to a designated Trauma Center